

ISO SUB BASE VALVE

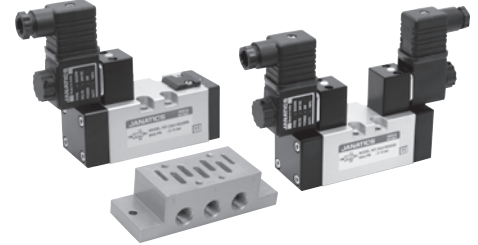
Series DS4

Cat No DS4 - 01 - 02 - A

ISO SUB BASE VALVE - SIZE 1

Features

- Mounting interface suitable for ISO 5599-1
- Manual override
- Wide range of coil voltages
- Optional - High temperature 150° C max. (Viton seals)



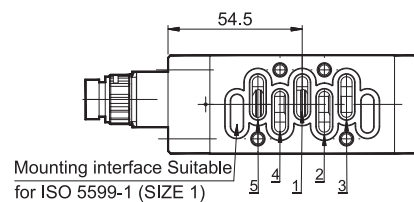
Technical Specifications

Model	DS4 - SR & SS
Type	5/2
Design	Spool type
Mounting interface	Suitable for ISO 5599-1; ISO size 1
Pneumatic connection on sub base	G1/4
Medium	Compressed air filtered, lubricated
Minimum working pressure	2 bar
Maximum working pressure	10 bar
Recommended oil for lubrication	ISO VG32 (Servo system 32)
Ambient temperature	Standard: -10° to +60° C; High temperature: +5° to +150° C max. **
Medium temperature	+5° to +60° C
Flow @	1200 lts/min
Noise level	85 dB(A)
Materials of construction	Aluminium, Nitrile, Brass, Acetal, PBT, Zinc, Steel, Viton
Electrical	
Coil width	22 mm
Voltage (V) ± 10%	AC (50 Hz) - 24, 48, 110, 220
	DC - 12, 24, 48, 110
Power consumption	AC - 6 VA, DC - 5 W
Duty cycle	Continuous
Class of insulation	Class F
Type of coil protection	IP65
Cable entry (PG9)	Suitable for Ø6 to Ø8 OD Cable (2wire / 3wire)

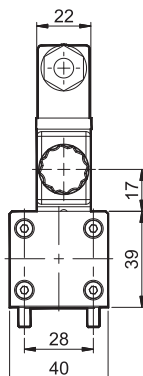
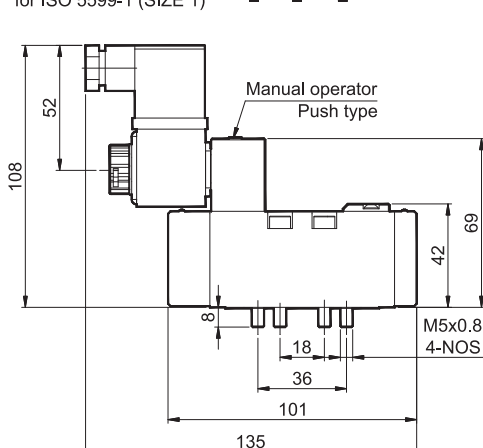
® Inlet pressure 6 bar, and pressure drop 1 bar

** Refer ordering no.

5 / 2 Single solenoid with spring return valve



Mounting interface Suitable for ISO 5599-1 (SIZE 1)



1 - Inlet, 2,4 - Outlet, 3,5 - Exhaust

Ordering No*	DS41502SR8 & DS41502SR8H
Symbol	 4 2 5 1 3

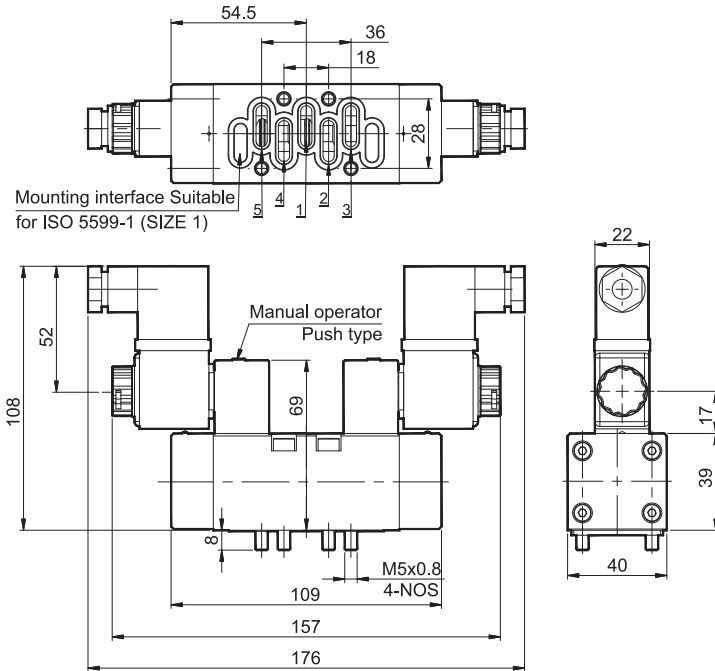
* For ordering no, voltage to be added

ISO SUB BASE VALVE

Series DS4

Cat No DS4 - 01 - 02 - A

5 / 2 Double solenoid pilot operated valve

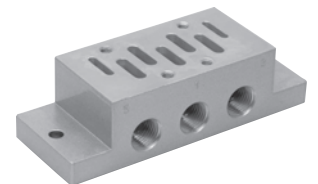
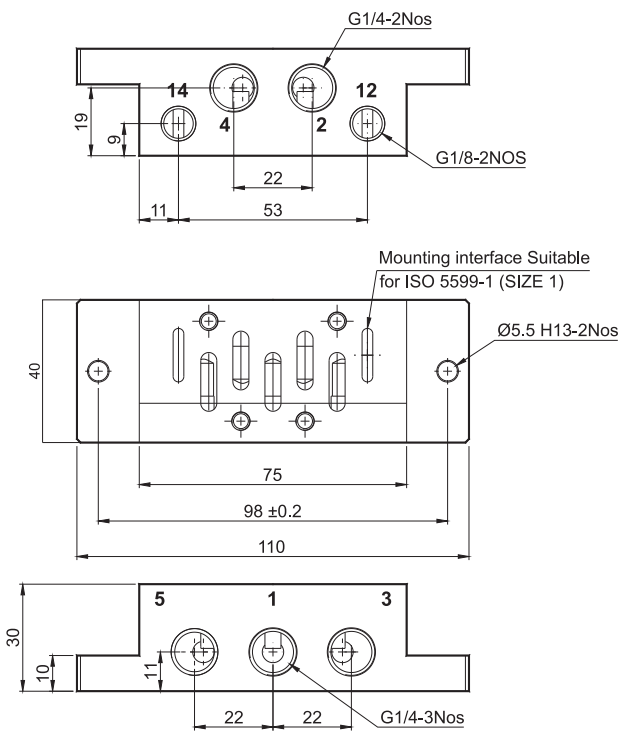


1 - Inlet, 2,4 - Outlet, 3,5 - Exhaust

Ordering No*	DS41502SS8 & DS41502SS8H
Symbol	

* For ordering no, voltage to be added

ISO Sub Base - Size 1



Ordering No	M01161
-------------	--------

ISO SUB BASE VALVE

Series DS4

Cat No DS4 - 01 - 02 - A

How to order

1. Solenoid valve + “Connectors without LED”

While ordering Solenoid operated valves, please mention the suffix given below along with the model number to indicate the required voltage

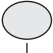

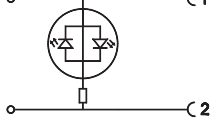
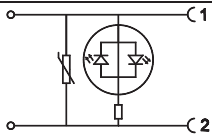
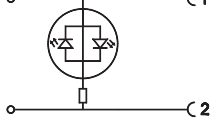
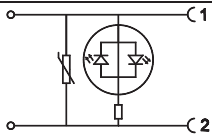
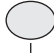
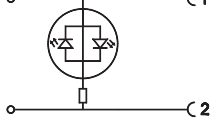
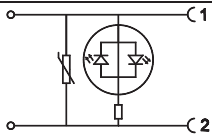
A 220V AC	Q 110V DC
B 110V AC	S 48V DC
D 48V AC	W 24V DC
G 24V AC	R 12V DC

Example

- a. The ordering no. for ISO size 1 - 5/2 24V D.C Double solenoid pilot operated valve with PG cable is **DS41502SS8-W**
- b. The ordering no. for ISO size 1 - 5/2 24V D.C Double solenoid pilot operated valve with Moulded cable is **DS41502SS8-W1**

2. Solenoid valve + “Connectors with LED”

While ordering Solenoid operated valves with LED connectors, given below in the corresponding tables.

 <table border="1" style="width: 100%; border-collapse: collapse;"> <thead> <tr> <th colspan="2">Voltage</th> </tr> </thead> <tbody> <tr> <td style="width: 20%;">A</td> <td>220V AC</td> </tr> <tr> <td>G</td> <td>24V AC</td> </tr> <tr> <td>W</td> <td>24V DC</td> </tr> </tbody> </table>	Voltage		A	220V AC	G	24V AC	W	24V DC	 <table border="1" style="width: 100%; border-collapse: collapse;"> <thead> <tr> <th colspan="2">Housing Colour & Indication</th> </tr> </thead> <tbody> <tr> <td style="width: 10%; text-align: center;">T0</td> <td>  Transparent housing with Bipolar LED indicator confirming supply voltage </td> </tr> <tr> <td style="text-align: center;">T1</td> <td>  Transparent housing with Bipolar LED indicator confirming supply voltage plus varistor to give over voltage protection to the source and load </td> </tr> </tbody> </table>	Housing Colour & Indication		T0	 Transparent housing with Bipolar LED indicator confirming supply voltage	T1	 Transparent housing with Bipolar LED indicator confirming supply voltage plus varistor to give over voltage protection to the source and load	<p>R</p> <table border="1" style="width: 100%; border-collapse: collapse;"> <thead> <tr> <th colspan="2">LED colour</th> </tr> </thead> <tbody> <tr> <td style="width: 20%;">R</td> <td>Red</td> </tr> </tbody> </table>	LED colour		R	Red	 <table border="1" style="width: 100%; border-collapse: collapse;"> <thead> <tr> <th colspan="2">Connection type</th> </tr> </thead> <tbody> <tr> <td style="width: 10%; text-align: center;">0</td> <td>PG Cable entry</td> </tr> <tr> <td style="text-align: center;">1</td> <td>Moulded cable (with 2metre length)</td> </tr> </tbody> </table>	Connection type		0	PG Cable entry	1	Moulded cable (with 2metre length)
Voltage																											
A	220V AC																										
G	24V AC																										
W	24V DC																										
Housing Colour & Indication																											
T0	 Transparent housing with Bipolar LED indicator confirming supply voltage																										
T1	 Transparent housing with Bipolar LED indicator confirming supply voltage plus varistor to give over voltage protection to the source and load																										
LED colour																											
R	Red																										
Connection type																											
0	PG Cable entry																										
1	Moulded cable (with 2metre length)																										

Example

1. The Ordering no for ISO size 1 - 5/2 24V D.C Double solenoid pilot operated valve, connectors with LED of Transparent colour housing with Bipolar LED and varistor, Red colour LED with moulded cable, - **DS41502SS8-WT1R1**
2. The Ordering no for ISO size 1 - 5/2 24V D.C Double solenoid pilot operated valve, connectors with LED of Transparent colour housing with Bipolar LED and varistor, Red colour LED with moulded cable, suitable for high temperature - **DS41502SS8H-WT1R1**

Coil spare ordering no.

Coil (without connector)	Ordering no.	
	AC	DC
Voltage		
220	AC23A	- NA -
110	AC23B	DC24Q
48	AC23D	DC24S
24	AC23G	DC24W
12	- NA -	DC24R

Subject to change